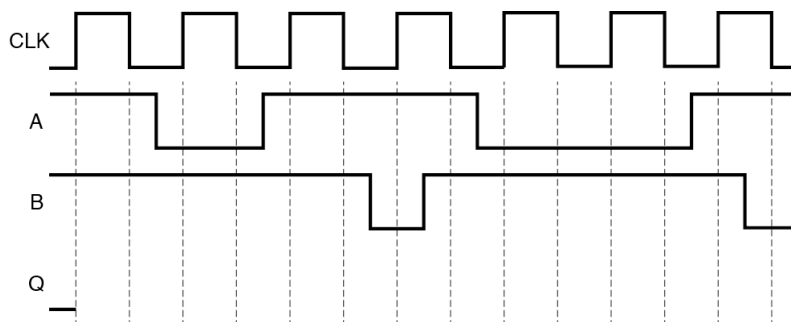
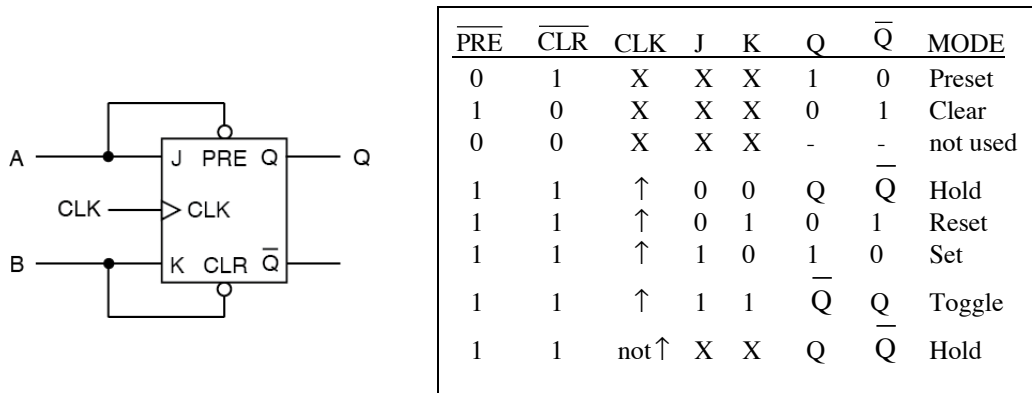


Ex: A circuit, truth table, and timing diagram are shown below. Fill in the missing waveform for Q in the timing diagram. Draw your answer directly on the timing diagram.



SOL'N: When A and B are high, the Q output toggles on the next positive edge of the clock. When A goes low, the Q output is immediately Preset to high. When B goes low, the Q output is immediately Cleared to low.

